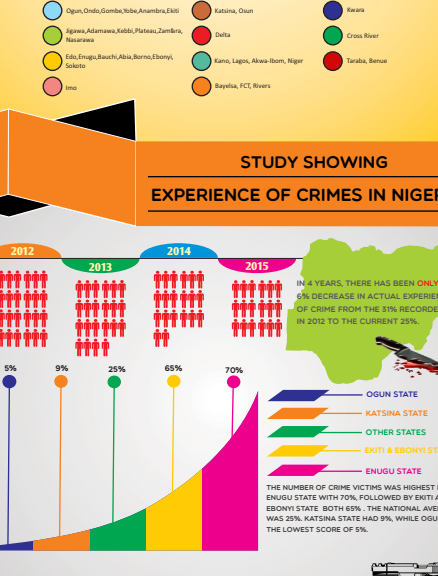


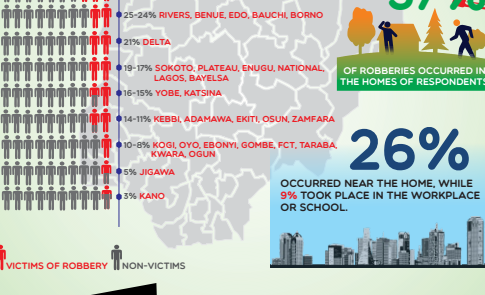
# THE ANATOMY OF CRIMES IN NIGERIA

## A STATISTICAL STUDY

### CHART SHOWING THE RATE OF THE FEAR OF CRIMES IN NIGERIA



### STUDY SHOWING EXPERIENCE OF CRIMES IN NIGERIA



IN 4 YEARS, THERE HAS BEEN ONLY A 6% DECREASE IN ACTUAL EXPERIENCE OF CRIME FROM THE 51% RECORDED IN 2012 TO THE CURRENT 25%.

THE NUMBER OF CRIME VICTIMS WAS HIGHEST IN ENUGU STATE WITH 70%, FOLLOWED BY EKITI AND EBONYI STATE BOTH 65%. THE NATIONAL AVERAGE WAS 25%. KATSINA STATE HAD 9%, WHILE OGUN HAD THE LOWEST SCORE OF 5%.

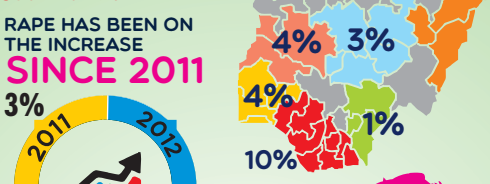
### ROBBERY CRIMES IN NIGERIA



37% OF ROBBERIES OCCURRED IN THE HOMES OF RESPONDENTS

26% OCCURRED NEAR THE HOME, WHILE 9% TOOK PLACE IN THE WORKPLACE OR SCHOOL.

### RAPE/ ATTEMPTED RAPE CRIMES IN NIGERIA



THE SOUTH-SOUTH HAS THE HIGHEST RAPE RATE

RAPE HAS BEEN ON THE INCREASE SINCE 2011

3% 2011, 5% 2012, 10% 2013, 3% 2014

WHERE WERE YOU RAPED?

36% SAID IT HAPPENED NEAR THEIR OWN HOMES

19% SAID IT HAPPENED AT THEIR HOMES.

13% SAID IT OCCURRED IN THE SCHOOL OR WORK PLACE.

### How Widespread is the Incidence Of Rape?

#### OPINION RATING

- DOES NOT EXIST (PROPAGANDA)
- HAPPENS SOMETIMES
- VERY WIDESPREAD (REAL)
- DON'T KNOW



### KIDNAPPING & ATTEMPTED KIDNAPPING CRIMES IN NIGERIA

A TOTAL OF 3% OF THE RESPONDENTS INTERVIEWED NATIONWIDE SAID THAT THEY HAD BEEN VICTIMS OF KIDNAPPING OR ATTEMPTED KIDNAPPING.

THE SOUTH WEST HAS THE HIGHEST INCIDENCE OF KIDNAPPING



### PHYSICAL ASSAULT CRIMES IN NIGERIA

THE SOUTH WEST HAS THE HIGHEST INCIDENCE OF KIDNAPPING



48% 33% 10% 9%

4% 3% 1% 10% 6%

3% 2011, 5% 2012, 10% 2013, 3% 2014

WHERE WERE YOU RAPED?

36% SAID IT HAPPENED NEAR THEIR OWN HOMES

19% SAID IT HAPPENED AT THEIR HOMES.

13% SAID IT OCCURRED IN THE SCHOOL OR WORK PLACE.

48% 33% 10% 9%

4% 3% 1% 10% 6%

3% 2011, 5% 2012, 10% 2013, 3% 2014

WHERE WERE YOU RAPED?

36% SAID IT HAPPENED NEAR THEIR OWN HOMES

19% SAID IT HAPPENED AT THEIR HOMES.

13% SAID IT OCCURRED IN THE SCHOOL OR WORK PLACE.

48% 33% 10% 9%

4% 3% 1% 10% 6%

3% 2011, 5% 2012, 10% 2013, 3% 2014

WHERE WERE YOU RAPED?

36% SAID IT HAPPENED NEAR THEIR OWN HOMES

19% SAID IT HAPPENED AT THEIR HOMES.

13% SAID IT OCCURRED IN THE SCHOOL OR WORK PLACE.

48% 33% 10% 9%

4% 3% 1% 10% 6%

3% 2011, 5% 2012, 10% 2013, 3% 2014

WHERE WERE YOU RAPED?

36% SAID IT HAPPENED NEAR THEIR OWN HOMES

19% SAID IT HAPPENED AT THEIR HOMES.

13% SAID IT OCCURRED IN THE SCHOOL OR WORK PLACE.

48% 33% 10% 9%

4% 3% 1% 10% 6%

3% 2011, 5% 2012, 10% 2013, 3% 2014

WHERE WERE YOU RAPED?

36% SAID IT HAPPENED NEAR THEIR OWN HOMES

19% SAID IT HAPPENED AT THEIR HOMES.

13% SAID IT OCCURRED IN THE SCHOOL OR WORK PLACE.

48% 33% 10% 9%

4% 3% 1% 10% 6%

3% 2011, 5% 2012, 10% 2013, 3% 2014

WHERE WERE YOU RAPED?

36% SAID IT HAPPENED NEAR THEIR OWN HOMES

19% SAID IT HAPPENED AT THEIR HOMES.

13% SAID IT OCCURRED IN THE SCHOOL OR WORK PLACE.

48% 33% 10% 9%

4% 3% 1% 10% 6%

3% 2011, 5% 2012, 10% 2013, 3% 2014

WHERE WERE YOU RAPED?

36% SAID IT HAPPENED NEAR THEIR OWN HOMES

19% SAID IT HAPPENED AT THEIR HOMES.

13% SAID IT OCCURRED IN THE SCHOOL OR WORK PLACE.

48% 33% 10% 9%

4% 3% 1% 10% 6%

3% 2011, 5% 2012, 10% 2013, 3% 2014

WHERE WERE YOU RAPED?

36% SAID IT HAPPENED NEAR THEIR OWN HOMES

19% SAID IT HAPPENED AT THEIR HOMES.

13% SAID IT OCCURRED IN THE SCHOOL OR WORK PLACE.

48% 33% 10% 9%

4% 3% 1% 10% 6%

3% 2011, 5% 2012, 10% 2013, 3% 2014

WHERE WERE YOU RAPED?

36% SAID IT HAPPENED NEAR THEIR OWN HOMES

19% SAID IT HAPPENED AT THEIR HOMES.

13% SAID IT OCCURRED IN THE SCHOOL OR WORK PLACE.

48% 33% 10% 9%

4% 3% 1% 10% 6%

3% 2011, 5% 2012, 10% 2013, 3% 2014

WHERE WERE YOU RAPED?

36% SAID IT HAPPENED NEAR THEIR OWN HOMES

19% SAID IT HAPPENED AT THEIR HOMES.

13% SAID IT OCCURRED IN THE SCHOOL OR WORK PLACE.

48% 33% 10% 9%

4% 3% 1% 10% 6%

3% 2011, 5% 2012, 10% 2013, 3% 2014

WHERE WERE YOU RAPED?

36% SAID IT HAPPENED NEAR THEIR OWN HOMES

19% SAID IT HAPPENED AT THEIR HOMES.

13% SAID IT OCCURRED IN THE SCHOOL OR WORK PLACE.

48% 33% 10% 9%

4% 3% 1% 10% 6%

3% 2011, 5% 2012, 10% 2013, 3% 2014

WHERE WERE YOU RAPED?

36% SAID IT HAPPENED NEAR THEIR OWN HOMES

19% SAID IT HAPPENED AT THEIR HOMES.

13% SAID IT OCCURRED IN THE SCHOOL OR WORK PLACE.

48% 33% 10% 9%

4% 3% 1% 10% 6%

3% 2011, 5% 2012, 10% 2013, 3% 2014

WHERE WERE YOU RAPED?

36% SAID IT HAPPENED NEAR THEIR OWN HOMES

19% SAID IT HAPPENED AT THEIR HOMES.

13% SAID IT OCCURRED IN THE SCHOOL OR WORK PLACE.

48% 33% 10% 9%

4% 3% 1% 10% 6%

3% 2011, 5% 2012, 10% 2013, 3% 2014

WHERE WERE YOU RAPED?

36% SAID IT HAPPENED NEAR THEIR OWN HOMES

19% SAID IT HAPPENED AT THEIR HOMES.

13% SAID IT OCCURRED IN THE SCHOOL OR WORK PLACE.

48% 33% 10% 9%

4% 3% 1% 10% 6%

3% 2011, 5% 2012, 10% 2013, 3% 2014

WHERE WERE YOU RAPED?

36% SAID IT HAPPENED NEAR THEIR OWN HOMES

19% SAID IT HAPPENED AT THEIR HOMES.

13% SAID IT OCCURRED IN THE SCHOOL OR WORK PLACE.

48% 33% 10% 9%

4% 3% 1% 10% 6%

3% 2011, 5% 2012, 10% 2013, 3% 2014

WHERE WERE YOU RAPED?

36% SAID IT HAPPENED NEAR THEIR OWN HOMES

19% SAID IT HAPPENED AT THEIR HOMES.

13% SAID IT OCCURRED IN THE SCHOOL OR WORK PLACE.

48% 33% 10% 9%

4% 3% 1% 10% 6%

3% 2011, 5% 2012, 10% 2013, 3% 2014

WHERE WERE YOU RAPED?

36% SAID IT HAPPENED NEAR THEIR OWN HOMES

19% SAID IT HAPPENED AT THEIR HOMES.

13% SAID IT OCCURRED IN THE SCHOOL OR WORK PLACE.

48% 33% 10% 9%

4% 3% 1% 10% 6%

3% 2011, 5% 2012, 10% 2013, 3% 2014

WHERE WERE YOU RAPED?

36% SAID IT HAPPENED NEAR THEIR OWN HOMES

19% SAID IT HAPPENED AT THEIR HOMES.

13% SAID IT OCCURRED IN THE SCHOOL OR WORK PLACE.

48% 33% 10% 9%

4% 3% 1% 10% 6%

3% 2011, 5% 2012, 10% 2013, 3% 2014

WHERE WERE YOU RAPED?

36% SAID IT HAPPENED NEAR THEIR OWN HOMES

19% SAID IT HAPPENED AT THEIR HOMES.

13% SAID IT OCCURRED IN THE SCHOOL OR WORK PLACE.

48% 33% 10% 9%

4% 3% 1% 10% 6%

3% 2011, 5% 2012, 10% 2013, 3% 2014

WHERE WERE YOU RAPED?

36% SAID IT HAPPENED NEAR THEIR OWN HOMES

19% SAID IT HAPPENED AT THEIR HOMES.

13% SAID IT OCCURRED IN THE SCHOOL OR WORK PLACE.

48% 33% 10% 9%

4% 3% 1% 10% 6%

3% 2011, 5% 2012, 10% 2013, 3% 2014

WHERE WERE YOU RAPED?

36% SAID IT HAPPENED NEAR THEIR OWN HOMES

19% SAID IT HAPPENED AT THEIR HOMES.

13% SAID IT OCCURRED IN THE SCHOOL OR WORK PLACE.

48% 33% 10% 9%

4% 3% 1% 10% 6%

3% 2011, 5% 2012, 10% 2013, 3% 2014

WHERE WERE YOU RAPED?

36% SAID IT HAPPENED NEAR THEIR OWN HOMES

19% SAID IT HAPPENED AT THEIR HOMES.

13% SAID IT OCCURRED IN THE SCHOOL OR WORK PLACE.

48% 33% 10% 9%

4% 3% 1% 10% 6%

3% 2011, 5% 2012, 10% 2013, 3% 2014

WHERE WERE YOU RAPED?

36% SAID IT HAPPENED NEAR THEIR OWN HOMES

19% SAID IT HAPPENED AT THEIR HOMES.

13% SAID IT OCCURRED IN THE SCHOOL OR WORK PLACE.

48% 33% 10% 9%

4% 3% 1% 10% 6%

3% 2011, 5% 2012, 10% 2013, 3% 2014

WHERE WERE YOU RAPED?

36% SAID IT HAPPENED NEAR THEIR OWN HOMES

19% SAID IT HAPPENED AT THEIR HOMES.

13% SAID IT OCCURRED IN THE SCHOOL OR WORK PLACE.

48% 33% 10% 9%

4% 3% 1% 10% 6%

3% 2011, 5% 2012, 10% 2013, 3% 2014

WHERE WERE YOU RAPED?

36% SAID IT HAPPENED NEAR THEIR OWN HOMES

19% SAID IT HAPPENED AT THEIR HOMES.</